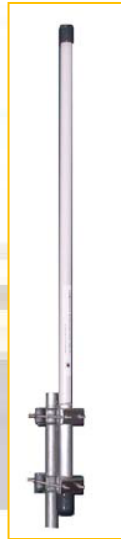


## Wi-Fi Antenna

### Outdoor 5.6GHz Omnidirectional 13dBi



#### Introduction

The outdoor Wi-Fi antenna is designed for IEEE802.11 a/n/ac. With 13dBi gain and 360° beamwidth, the antenna is used to cover large areas with high reliable Wi-Fi.

#### Specification

- ▶ Frequency: 5.4GHz – 5.7GHz
- ▶ IEEE Standard: 802.11 a/n/ac
- ▶ Characteristics: Omnidirectional
  - Horizontal: 360°
  - Vertical: 5°
- ▶ Gain: 13dBi
- ▶ Impedance: 50Ohm
- ▶ Max. Power: 50Watt
- ▶ Connector: N Connector - female
- ▶ Environment: outdoor
- ▶ Operation Temp: -30°C - 75°C
- ▶ Storage Temp: -30°C - 75°C
- ▶ Wind Load: 98 N
- ▶ Dimensions: L:87cm / Ø:4cm
- ▶ Weight: 700g
- ▶ Colour: white

Specification may change without prior notice. Please refer to [www.arcutronix.com](http://www.arcutronix.com) for latest data-sheets.

For more information please contact arcutronix GmbH or visit us at [www.arcutronix.com](http://www.arcutronix.com).

Version 12/16 © 2016 arcutronix GmbH