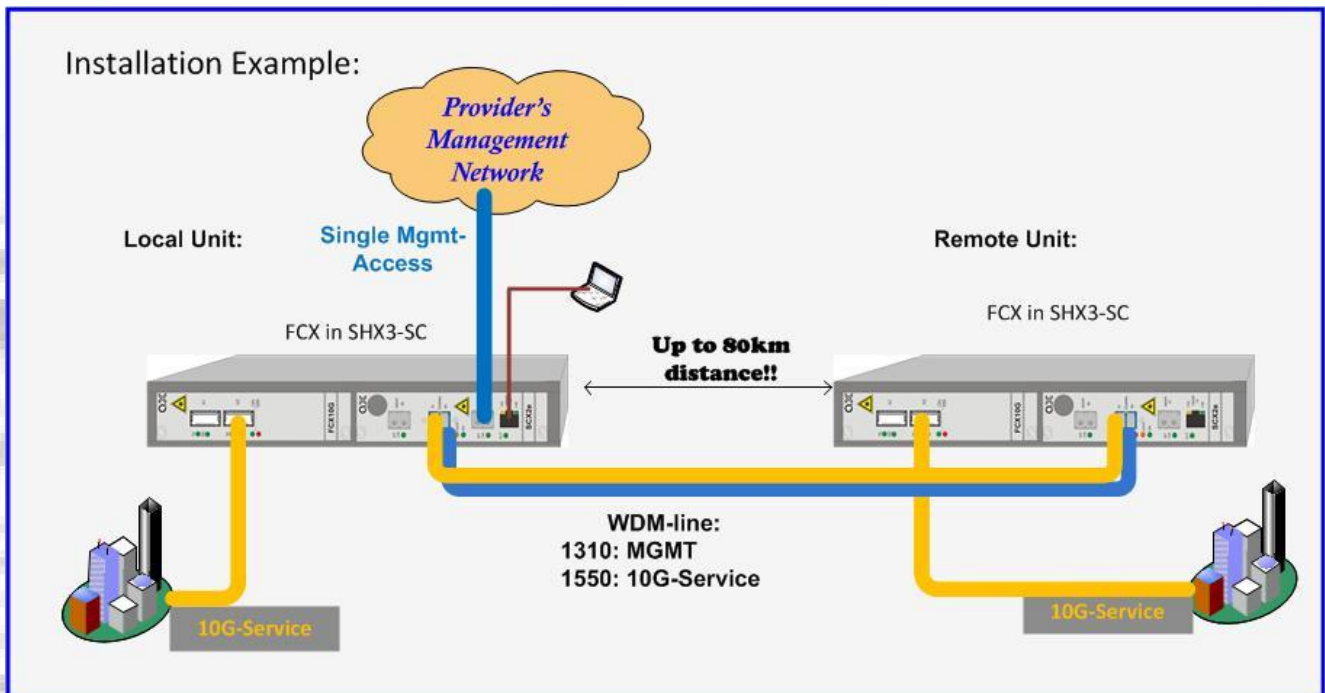


## Remote Managed FCX-Family



### Introduction

The new system Housing SHX3-SC with integrated System Controller SCX2e-WDM is made to offer easy local and remote management capability for the complete Multi-Protocol Transponder family FCX of arcutronix. The integrated SCX2e-WDM allows the administrator to control and monitor by using SNMP and Web-GUI.

The in-band management capability allows Carriers and ISPs to maintain and supervise all devices inside management system via single NMS access point. Trap signaling helps to detect errors in case of any failure or status change at the local or remote site.

The management traffic for the remote unit is simple added by WDM technique on top of the user's payload without any interruption of service or quality.

The installation of the system is easily done as desktop or wall-mounted solution. An integrated wide-range power supply gives the opportunity to feed the system either with 110/230VAC mains or 48VDC input. Thus, the SHX3-SC offers the widest range of flexibility.

### Features

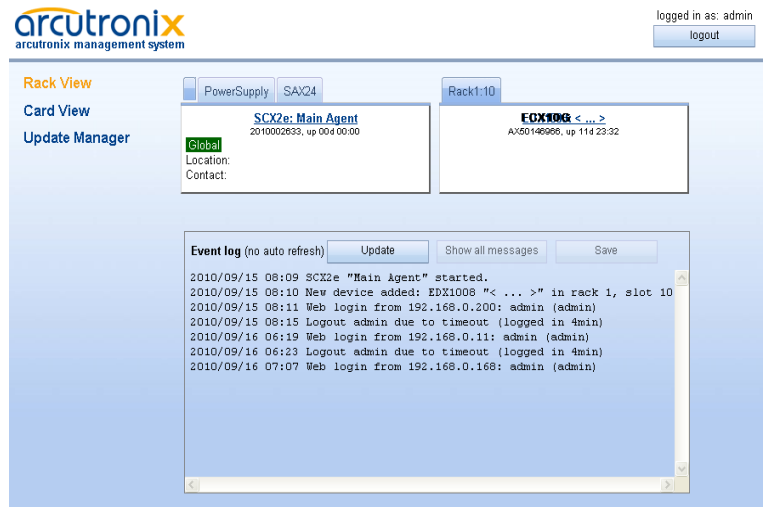
- ▶ Cage for arcutronix FCX family with integrated SNMP-agent
- ▶ Alarm contact
- ▶ Integrated wide range power supply: 48 VDC ... 110/230 VAC
- ▶ Compact design
- ▶ Ready for Wall-mount installation
- ▶ Central management access device for Multi-Protocol Transponder
- ▶ Various management access options: SNMPv2c, SNMPv3, Web-GUI
- ▶ SNMP trap-signalling in case of local or remote status changes
- ▶ WDM overlay to user's traffic
- ▶ Flexible in wavelength by the usage of SFP and/or XFP

# Remote Managed FCX-Family

## Web-GUI

Web based graphical user interface is accessible from every standard web browser. Using Web-GUI, all components of local and remote FCX and Agent can be monitored and configured.

All signals and the card status are displayed graphically. When installing new devices, they will be automatically discovered and displayed.



## Specifications

### NMS:

#### 10/100BaseTx port

- Connector: RJ45
- Ethernet according to IEEE 802.3
- IP Management for Web-GUI, SNMP

### NMS-Features

- SNMPv2c and SNMPv3
- Web-GUI via standard browser
- SSH-access for maximum security
- File Transfer for Up- and Download Purposes via TFTP, SFTP and http
- Flash File System for all SW download files
- IP-Forwarding to connect remote locations
- Trap signalling in case of any local or remote failure
- Alarm Event Logging

### WDM:

#### Performance

- Insertion Loss
  - 1550nm Port: <0.8 dB
  - 1310nm Port: <0.8 dB
- Isolation: > 40 dB (both Ports)
- Return Loss: > 45 dB
- PDL: < 0.2 dB
- Optical Power: 300mW

### Housing:

#### Capacity

- 1x 3RU line-card
- 1x 3RU agent-card (SCX2e-WDM)

#### Alarm-Contact

- 1x Alarm-Relay
- Connector: 3 pins (RIA)

#### Environmental

- Operating: +5 to +40°C
- Storage: -30 to +80°C
- Humidity: 10 to 90%, non-condensing

#### Power

- Maximum power for line-cards available:
  - SHX3-SC: 14 VA
- Input: AC or DC
  - 48 VDC (+/- 10%)
  - 110-230 VAC
- Connector: IEC320

#### Physical

- Weight (unequipped): 1,9 kg
- Dimensions: 40mm H x 278mm W x 267mm D

Specification may change without prior notice. Please refer to [www.arcutronix.com](http://www.arcutronix.com) for latest data-sheets.

For more information please contact arcutronix GmbH or visit us at [www.arcutronix.com](http://www.arcutronix.com).

Version 12/11 © 2011 arcutronix GmbH