

SCX2 System Controller (SNMP)



Introduction

The System Controller SCX2 is used to control and configure all types of arcutronix connectivity devices. The SCX2 allows the administrator to control and monitor more than 250 local and corresponding remote devices.

The System Controller provides access by using SNMP, Web-GUI, Telnet and local control terminal (e.g. VT100).

Web-GUI or local management (menu driven VT100 Terminal) assist a user friendly field installation and configuration. For SNMP management, several standard and product specific MIB files (Management Information Base) are provided.

SNMP management can be interconnected to any SNMP-compatible management software such as HP Open View and SNMPc.

Remote SW-upload for SCX2 and each other component in the system rack is realized via TFTP. After copying SW updates to SCX2 Flash File System updated files are loaded into agent and plugged modules during boot-up or on administrator request.

The in-band management capability, in combination with the System Controller SCX2 allows Carriers and ISPs to maintain and supervise all devices inside management system via single NMS access point (IP forwarding). Trap signaling helps to detect errors in case of any failure or status change at the local or remote site.

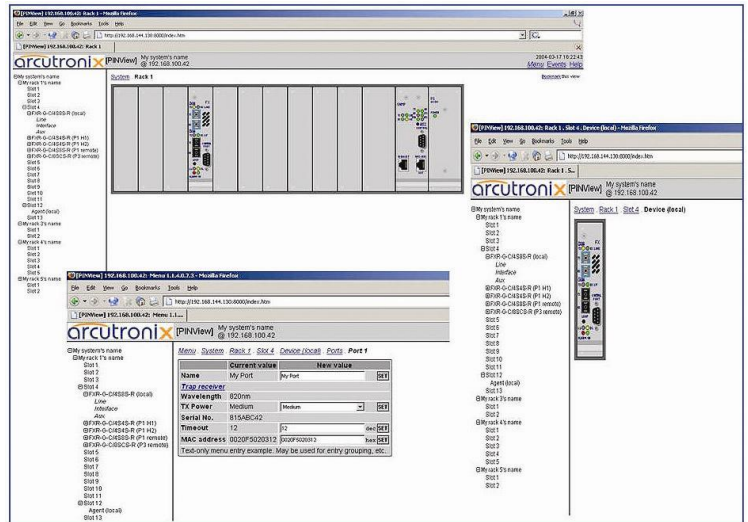
Features

- ▶ Central management access device for system racks (SRX family)
- ▶ Up to 24 rack cards can be managed and supervised per system rack
- ▶ Remote SW-upload for each component in a system rack via TFTP
- ▶ Flash File System, for saving new and old SW files of all plugged cards
- ▶ Various management access options: SNMP, Web-GUI, Telnet, VT100
- ▶ Power and Fan control functionality
- ▶ SNMP trap-signalling in case of local or remote status changes
- ▶ Discovery of system rack types
- ▶ Acoustic alarm
- ▶ Alarm relay - Enhanced alarm threshold selectable in addition to autonomous alarm function via alarm relay contacts on fan module
- ▶ IP-forwarding, to afford IP management of all SCX2 cards in a network
- ▶ Compact 3RU rack card
- ▶ Power supply via system racks (SRX)

SCX2 System Controller (SNMP)

Web-GUI

Web based graphical user interface is accessible from every standard web browser. Using Web-GUI, all components of local and remote site can be monitored and configured. All signals and the card status in different racks are displayed graphically. When installing new devices, they will be automatically discovered and displayed.



Specifications

10/100BaseTx port

- Connector: RJ45
- Ethernet according to IEEE 802.3
- IP Management for Web-GUI, SNMP, Telnet

Control Port RS232

- Connector: RJ45
- VT100 Management (57.6 Kbps or 9.6 Kbps, protocol: 8N1, no handshake)

Features

- SNMPv1 (via Ethernet or SLIP/PPP)
- Web-GUI via standard browser
- Telnet
- Terminal Management (e.g. VT100)
- File Transfer for Up- and Download Purposes via TFTP
- Flash File System for all SW download files
- IP-Forwarding to connect remote locations
- Trap signalling in case of any local or remote failure
- Alarm Event Logging
- Power Supply via Rack, e.g. SRX10 or SRX24

Environmental

- Operating: +5 to +40°C
- Storage: -30 to +80°C
- Humidity: 10 to 90%, non-condensing

Power

- Power Consumption: <6,7 VA
- Input: +5VDC ±5% via Backplane

Physical

- Weight: < 350g
- Dimensions:
 - 130mm H x 43,18mm W (8,5HP) x 190mm D
- 19" rack: slot 11 in SRX10 or slot 25 in SRX24

Specification may change without prior notice. Please refer to www.arcutronix.com for latest data-sheets.

For more information please contact arcutronix GmbH or visit us at www.arcutronix.com.

Version 03/11 © 2011 arcutronix GmbH