

## SRX3



## Introduction

The SRX3 is a triple-slot housing, which allows to plug all arcutronix rack mount cards. The SRX3 can be used in a 19"-shelf or as desk-top application. A flexible front adaptor allows to use the SRX3 with lots of different product groups and families. Together with a multi voltage power supply unit, which allows AC and/or DC feeding, the SRX3 is the most flexible standalone chassis with 1RU in high.

Two variants of SRX3 are available which differ in the management capability. While the SRX3 offers serial access to all plugged Line-cards for basic configuration and supervision, the SRX3plus houses internally a complete management agent (SCX). Thus SRX3plus offers all capabilities of management access, including web-based, SNMP and IP-SSH. This making the SRX3plus to powerful system in 1RU size, completing arcutronix Multi Service Platform (MSP).

The SRX3 offers a VT100 (RS232) serial interface, for configuration and local supervision of the installed Line-cards. The SRX3plus has an RJ45 connector TCP/IP access. The 10/100BaseT interface allows local and/or remote management access and integration into higher network systems. Both variants are equipped with alarm-output, which completes the unique feature-set of the SRX3.

The SRX3plus can be supplied with AC or DC power. For SRX3 AC power supply is available.

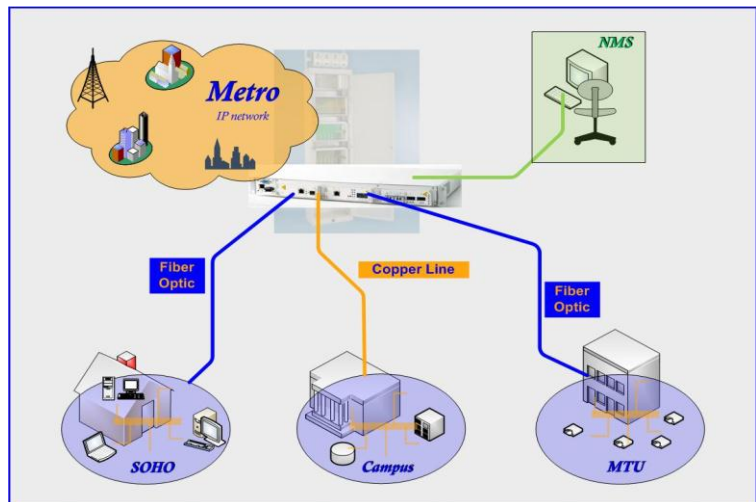
## Features

- ▶ Cage for arcutronix 3RU rack mounted line-cards
- ▶ Capacity: up to 3x line-cards (LC)
- ▶ VT100 management port via D-Sub9 connector
- ▶ SRX3plus with integrated system controller (SCX) for Web-based, SNMP, IP-SSH management access via TCP/IP port (RJ45)
- ▶ AC (110/230V) or DC power supply available (SRX3 with AC power supply only)
- ▶ Alarm contact
- ▶ Fan cooled
- ▶ Compact design: EIA 19"/1RU ("Pizza Box")

## SRX3

### Application Example

SRX3 is the elemental housing for arcutronix MSP. It is placed on the edge of access network to shelter arcutronix connectivity products as well as Ethernet demarcation devices. One housing for all applications, this makes the SRX3 so unique.



### Specifications

#### Capacity

- Common:
  - up to 3x line-cards 3RU
  - 2x Fans integrated
- SRX3plus:
  - integrated System Controller (SCX)

#### Management I/F

- Common:
  - 1x VT100 management port
  - Connector: D-Sub9
- SRX3plus:
  - TCP/IP port
  - Data Rate: 10/100BaseT
  - Connector: RJ45
  - Integrated System Controller (SCX)

#### Alarm-Contact

- 1x Alarm-Relay
- Connector: RIA (3 pin)

#### Environmental

- Operating: 0 to +40°C
- Storage: -25 to +70°C
- Humidity: 5 to 95%, non-condensing

#### Power

- Maximum power consumption / slot:
  - 15VA (5VDC, 3A)
- Input: AC (SRX3/SRX3plus)
  - Voltage: 110-230 VAC (+/- 10%)
  - Connector: IEC 60320-C14
- Input: DC (SRX3plus)
  - Voltage: -48V / -60 VDC (+/- 20%)
  - Connector: RIA (3 pin)

#### Physical

- Weight (unequipped):
  - SRX3: 4,0 kg
  - SRX3plus: 4,5 kg
- Dimensions:
  - Standalone: 44mm H x 448mm W x 306mm D
  - 19" version: 44mm H x 483mm W x 306mm D
- Form Factor: EIA 19", 1RU
- Including kit for 19" rack mounting

Specification may change without prior notice. Please refer to [www.arcutronix.com](http://www.arcutronix.com) for latest data-sheets.

For more information please contact arcutronix GmbH or visit us at [www.arcutronix.com](http://www.arcutronix.com).

Version 03/11 © 2011 arcutronix GmbH