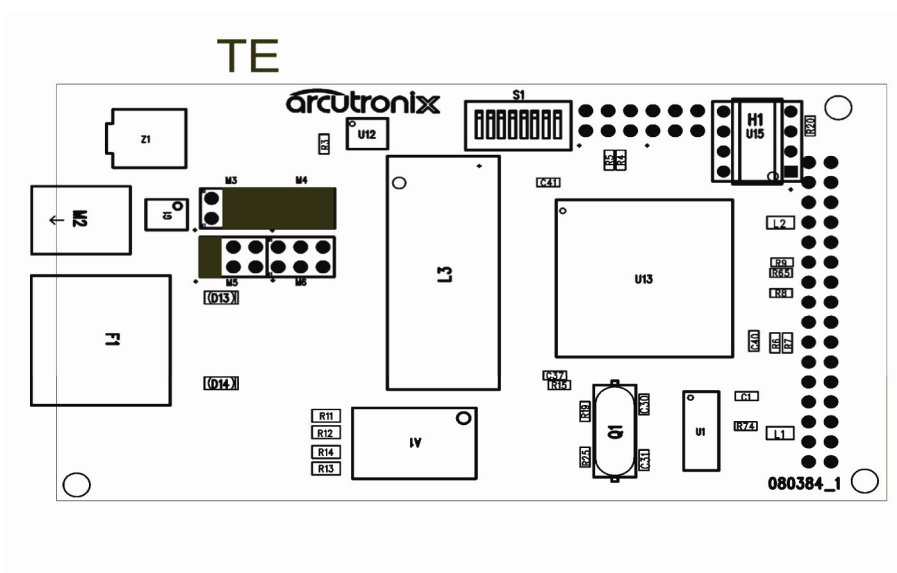


**User Information for ISDN Module
IM-I.430**

Supplement of the Quick Installation Guide

This instruction is for the quick configuration of the **Operation Mode**. For detailed information please read the manual.

TE-Mode: To configure it into TE-Mode the unit is connected to a PABX and is acting as normal S0-telephone equipment. TE-mode shall be selected for the local device.



NT-Mode: To configure it into NT-Mode the unit is acting as a PABX and shall be selected for the remote device.

