

# PuTTY

## Configuration & Usage

### Configuration of PuTTY

Autor: AZI  
Date: 20.08.2008

<b>1</b>	<b>INTRODUCTION</b> .....	<b>2</b>
<b>2</b>	<b>INSTALLATION</b> .....	<b>2</b>
<b>3</b>	<b>CONFIGURATION</b> .....	<b>2</b>
3.1	FIRST APPEARANCE .....	2
3.2	SESSION PARAMETERS.....	2
3.3	TERMINAL PARAMETERS.....	3
3.4	WINDOW PARAMETERS.....	4
3.5	CONNECTION PARAMETERS .....	4
3.5.1	Proxy.....	5
3.5.2	Telnet.....	6
<b>4</b>	<b>SAVE CONFIGURATION</b> .....	<b>7</b>
<b>5</b>	<b>OPEN PUTTY</b> .....	<b>8</b>
<b>6</b>	<b>FURTHER HELP</b> .....	<b>10</b>

# PuTTY

## Configuration & Usage

### 1 Introduction

Steps for proper configuration of PuTTY.

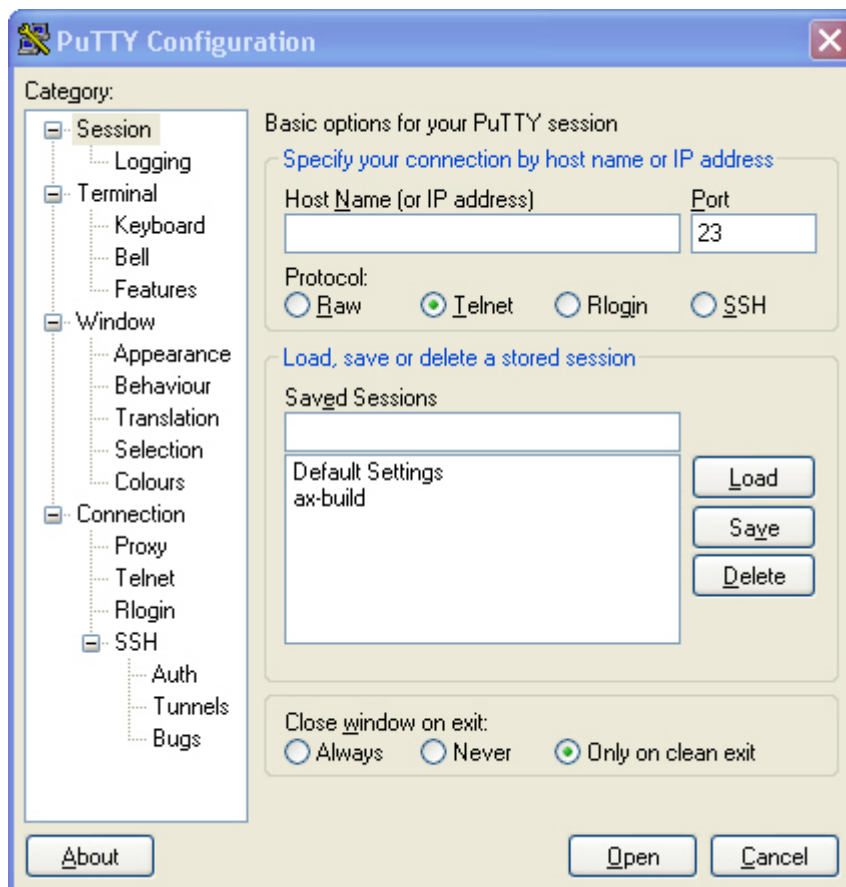
### 2 Installation

Open the putty.exe – file. This will install PuTTY on your computer.

### 3 Configuration

#### 3.1 First Appearance

After installation the PuTTY can be started. The following configuration window will open:



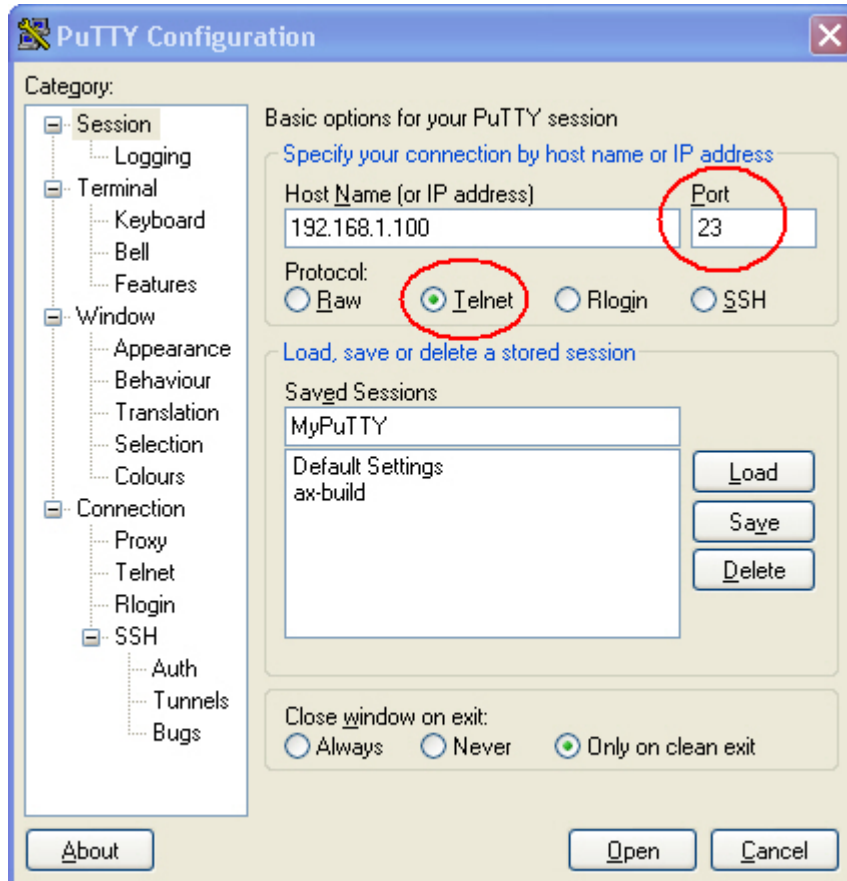
#### 3.2 Session Parameters

# PuTTY

## Configuration & Usage

Here the IP-address of the ax-unit to be managed (e.g. PWX100) and the protocol to use (Telnet) must be entered.

Additionally it is useful to enter a session name to recall the settings later:

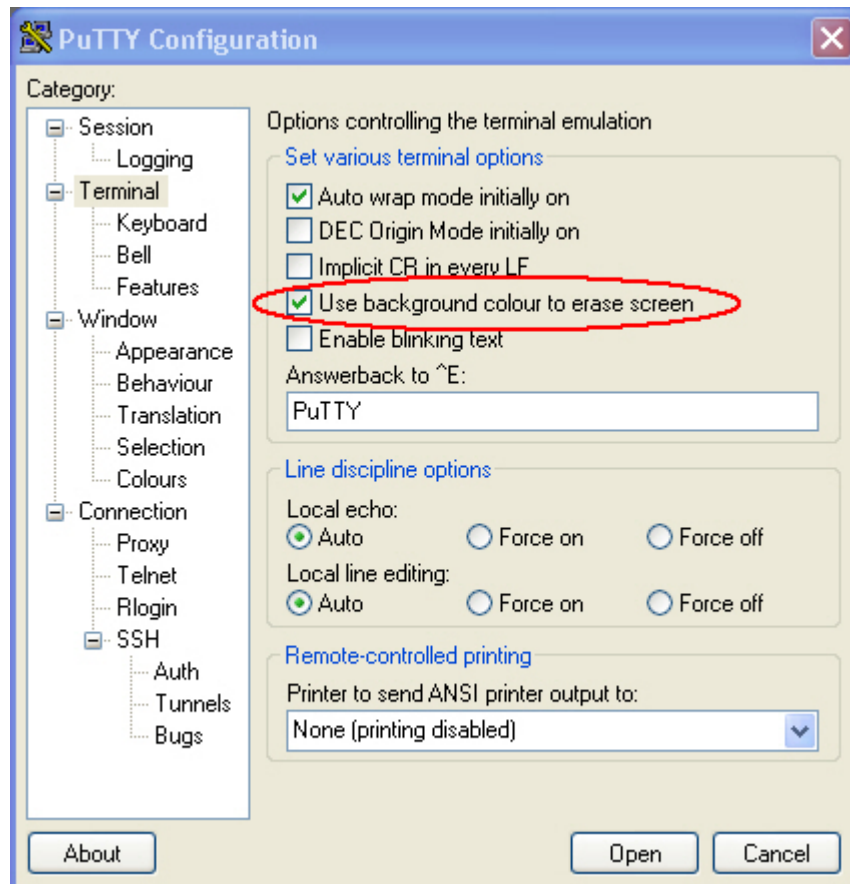


### 3.3 Terminal Parameters

For the Terminal, it must be selected the option “Use background color to erase screen”:

# PuTTY

## Configuration & Usage



### 3.4 Window Parameters

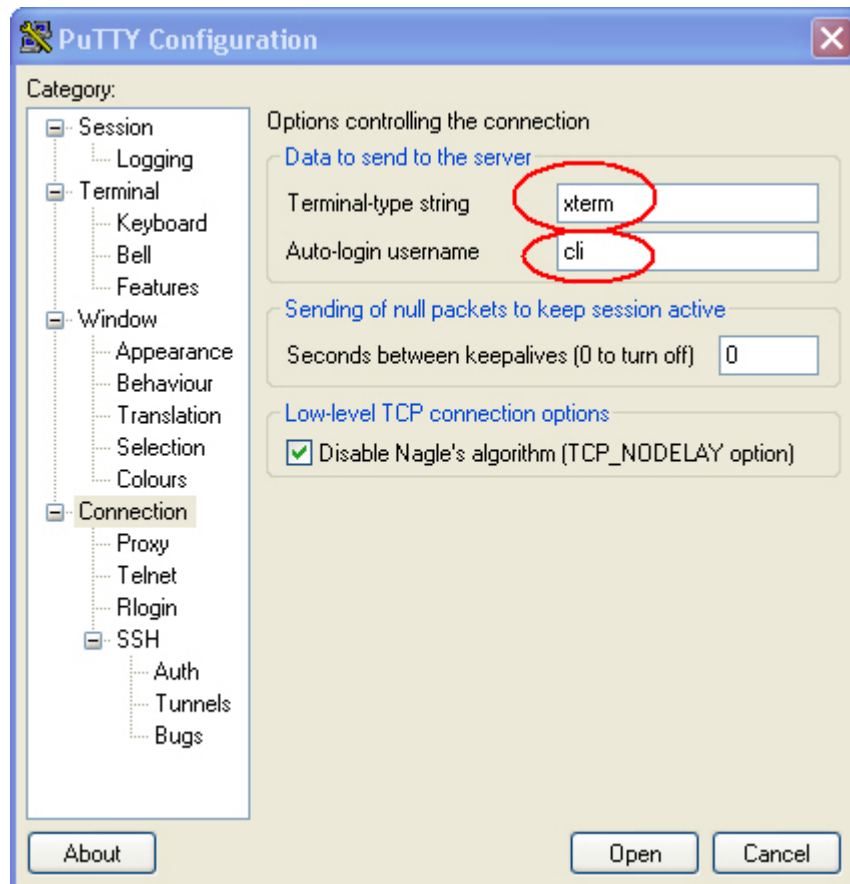
Nothing must be changed. Everything keeps the default.

### 3.5 Connection Parameters

For the connection, the terminal-type must be "xterm" and the auto-login is „cli“:

# PuTTY

## Configuration & Usage

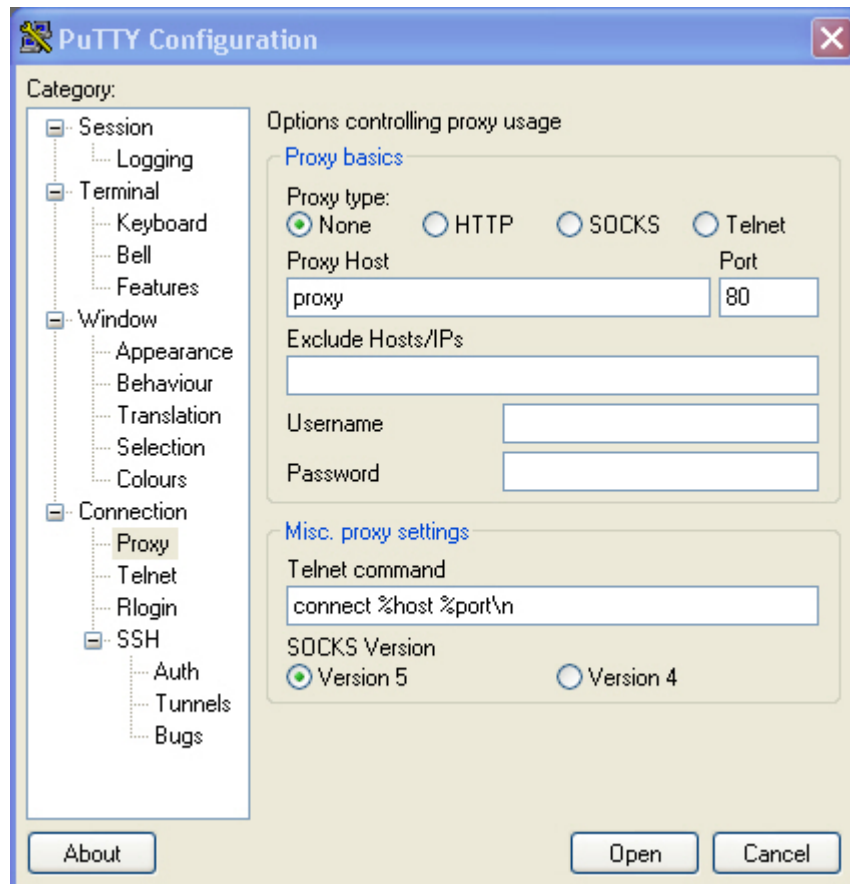


### 3.5.1 Proxy

If Proxy-settings are required:

# PuTTY

## Configuration & Usage

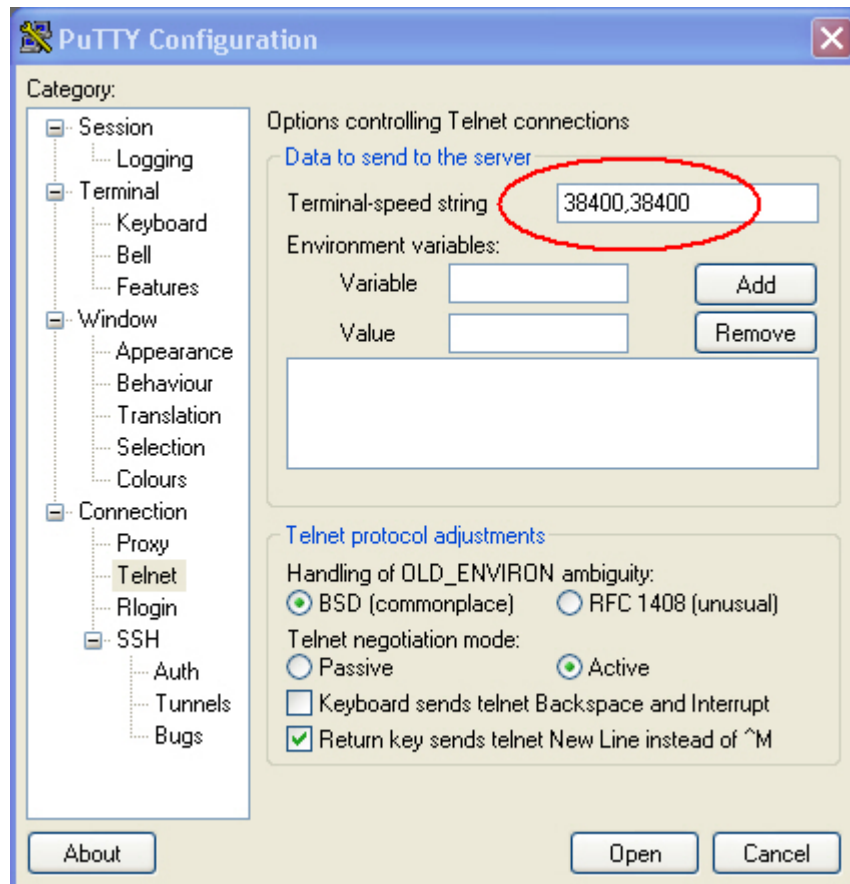


### 3.5.2 Telnet

The speed for the session must be entered (default is 38400 kBaud):

# PuTTY

## Configuration & Usage

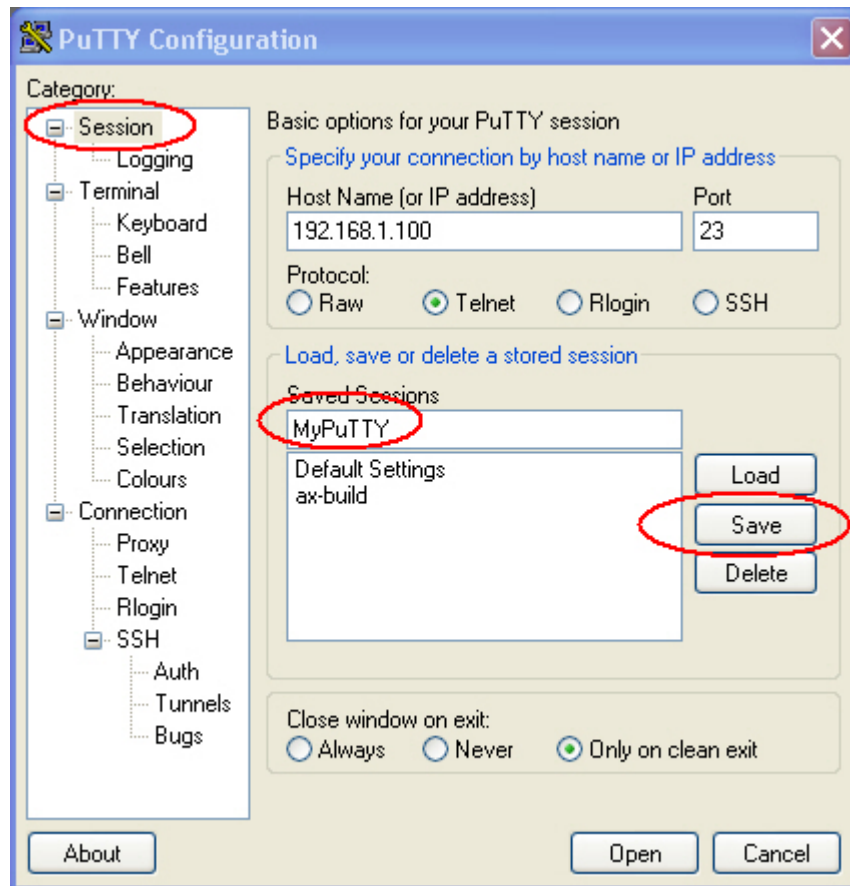


## 4 Save Configuration

Press the SAVE-Button to make the configuration easily reusable for later sessions. A name is required to find the configuration later again:

# PuTTY

## Configuration & Usage



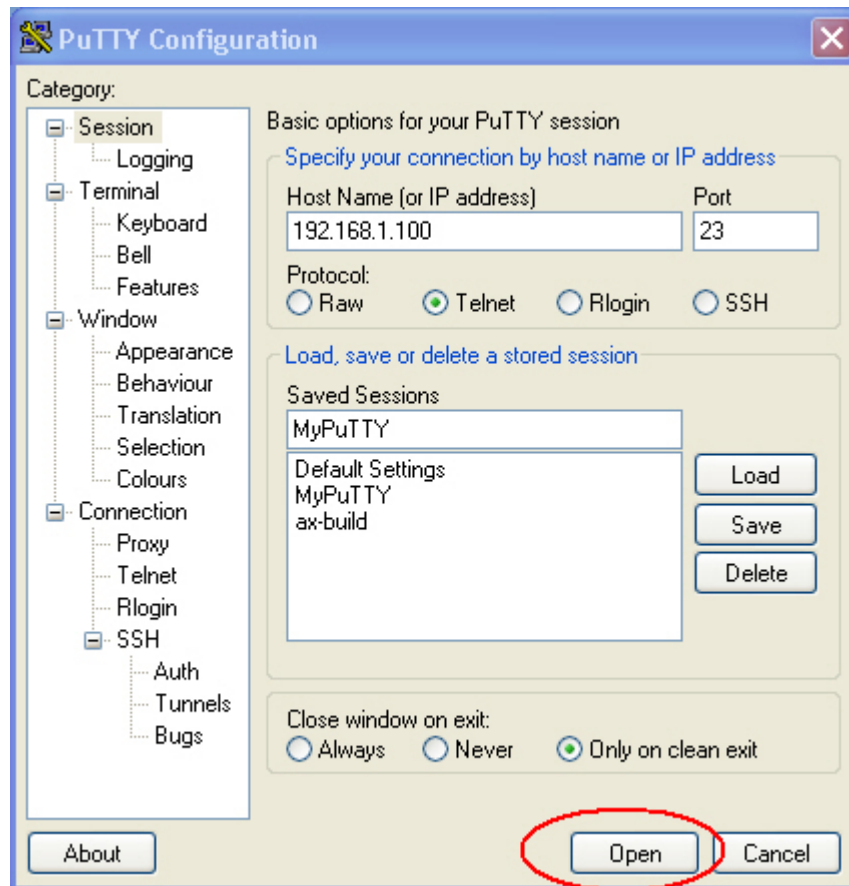
## 5 Open PuTTY

Press the OPEN-Button to connect to the device:



# PuTTY

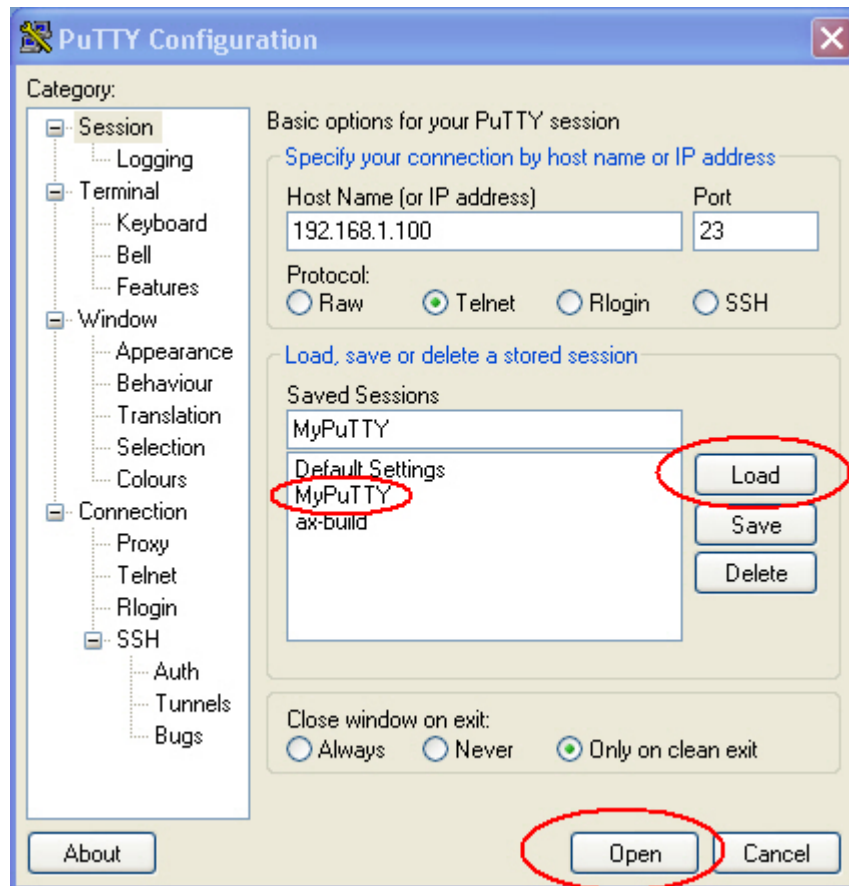
## Configuration & Usage



If the session parameters have been stored, you can recall them and then press open:

# PuTTY

## Configuration & Usage



## 6 Further help

For further help, please contact arcutronix GmbH at

[service@arcutronix.com](mailto:service@arcutronix.com) or meet us at the Internet

[www.arcutronix.com](http://www.arcutronix.com)